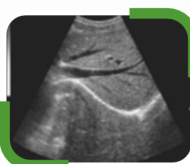




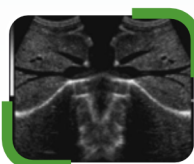
### Spesifikasi Produk :

- Monitor medis 15 Inch LED
- Level Grayscale : 256
- Antarmuka : DICOM, USB, XVGA, Video
- Mode pemindaian : Convex, linear, Micro-Convex, Intra Cavity
- Mode gambar : B, B/B, B/M, M, 4B
- Optimasi gambar : Focus, Depth
- Fungsi pengukuran Gynecology dan pembuatan laporan otomatis
- Probe yang didukung : 3.5 MHZ (Standard), 6.5 MHZ (Opsional), 7.5 MHZ (Opsional)
- Mendukung penggunaan 2 probe
- Rechargeable Batterai
- Portabel, berat 4.2 kg (diluar aksessories)
- Adapter rating : 100-240V~, 1.2-0.6A, 50-60Hz
- Main device rating : DC14V 4.0A
- Ukuran device rating : 360 x 355 x 65 mm ( L x W x H )

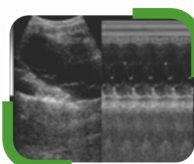
### Clinical Image Cases :



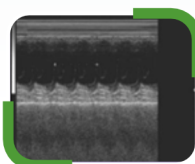
B



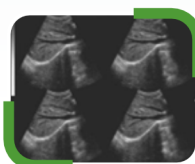
B/B



B/M



M



4B

### Aksesoris



Convex Probe



Power Adapter



Stabilizer



Trolley

### Opsional



Micro - Convex Probe



Linear Probe



Trans - Vaginal Probe



Trans - Rectal Probe

